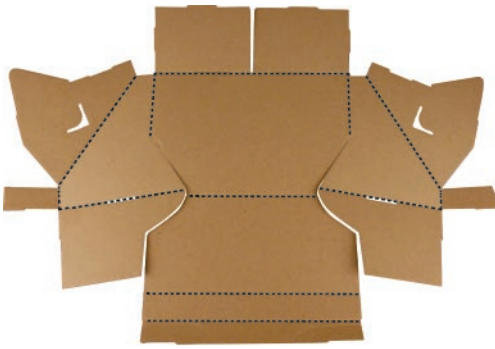


MODEL # 8021

12" CD/DVD Counter Display



1



Fold the display in half.

2



Fold in side flaps.

3



Fold up side panels.

4



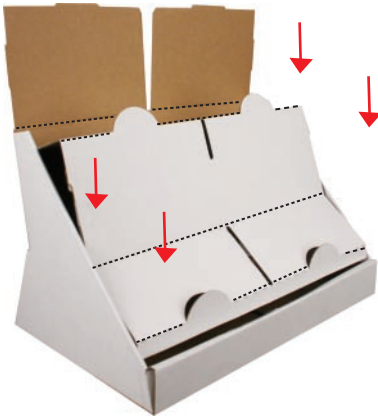
Second Item: Curl the display

5



Then fold in the bottom end, forming a square

6



Slide in the Second item into the main display

7



Push down and lock into position.

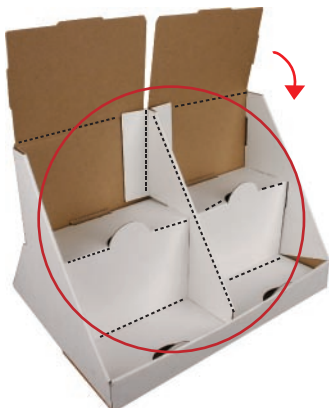
8



Third Item: Fold the item in half where the lines are marked

9

Inset the third item right in between the center, locking into place. Then flip in top panels.



10



11

Insert Header



2