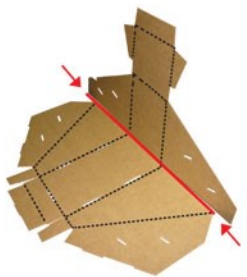




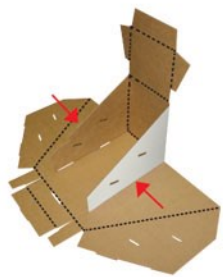
1

Fold the display in half.



2

Fold in side flaps.



3

Fold up side panels.



4



Fold over left flap.

5



Fold over right flap.

6

Fold in tabs and then fold the front lip up and over the tabs.



7

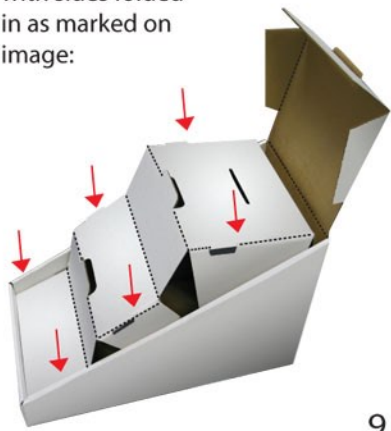
To install tier:



Locate tier insert.

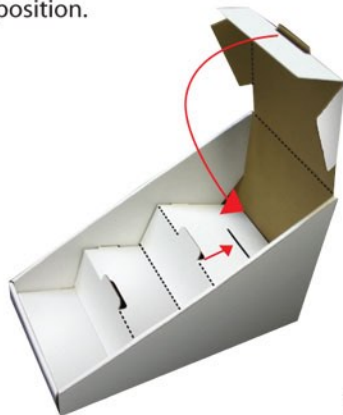
8

Place Insert in tray with sides folded in as marked on image:



9

Then fold down the top panel so it locks into position.



10

Insert Header

