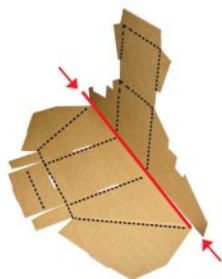




1

Fold the display in half.



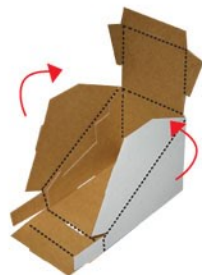
2

Fold in side flaps.

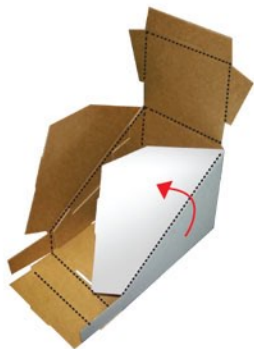


3

Fold up side panels.

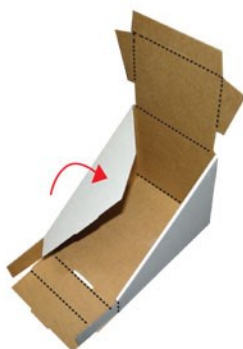


4



5

Fold over right flap.



6

Fold in tabs and then fold the front lip up and over the tabs.



7

To install tier:



Locate tier insert.

8

Place Insert in tray with sides folded in as marked on image:



9

Then fold down the top panel so it locks into position.



10

Insert Header

