

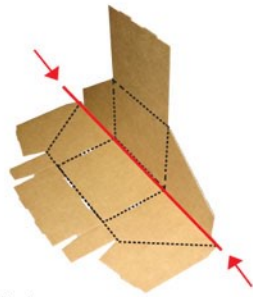
MODEL # 8007 & 8008

6" Counter Display



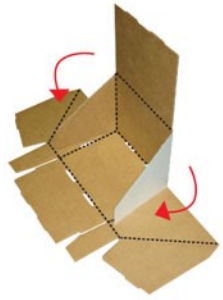
1

Fold the display in half.

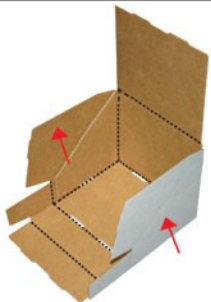


2

Fold in side flaps.



3



Fold up side panels.

4



Lock in side panels.

5

Fold the front lip up and over the tabs.



6



Fold down the top panels .

7



Then lock into position.

8

Insert Header



9

To install tier:



Locate tier insert.

10

Place Insert in tray with sides folded in as marked on image.



11



12