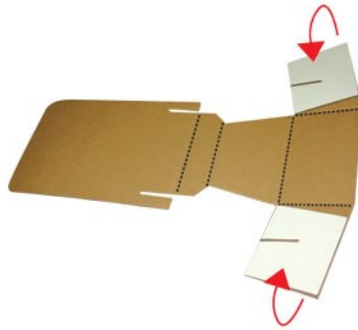


Fold in side panels.

1



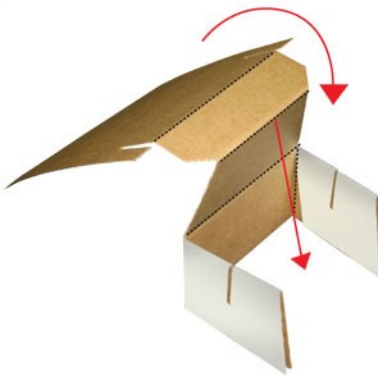
Fold up both sides.

2



**A** Roll entire display forward so it sits as shown in Step 4.

3



Fold over top panel so it moves downward.

4

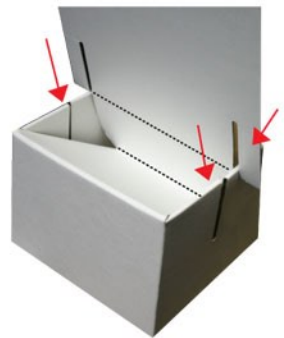
BACK VIEW



Push down so that the slots on top panel slide as shown in Step 6 & 7 into base.

5

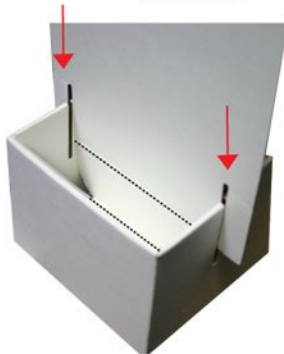
FRONT VIEW



Push down so it slides through the sides.

6

FRONT VIEW



Lock into position.

SIDE VIEW



7

